



# Village View

The Newsletter of  
Camphill Village 

November 2014

A Practical Guide  
to the Benefits of  
Configurability  
in Ultrasonic  
Distance  
Measurement  
Sensor

Camphill Village  
is a community  
that celebrates  
and honors the  
uniqueness of  
each individual,  
regardless  
of outward  
appearance  
of limitation  
or disability.

Chris Lydon,  
one of 12 residents who have  
made the Village their home  
for 50 years or more.

# The Relevance of CRAFT

## In the Age of Machines



# THE Camphill Village BOOKBINDERY

Located at the Village Green, the Bookbindery was one of the first workshops in the Village. The team currently numbers nine. The work is highly detailed, requiring considerable care and attention, and brings great satisfaction to the workers.

From the outset, the workshop has focused on handmade and bound blank books of various sizes. Cloth for the covers of the books is made in the Village's Weavery, while the Bookbindery team makes the marbled paper for the inside covers.

Along with producing blank books, the workshop makes decorated matchbox covers, large soft-cover sketchbooks and wrapping paper. The shop makes paper and produces small blank books with covers salvaged from cardboard boxes. The Bookbindery also repairs old and damaged books.

To arrange a tour of the Bookbindery, please call 518-329-0642.



**Excerpts from an interview with  
Stephen Steen, Workmaster of the  
Bookbindery at Camphill Village:**

*Our goal is to create a product, to enjoy a healthy social life while doing so, and to give people the experience that their life is meaningful, that they can connect to what they're doing and to one another.*

*The workshops offer people the opportunity to recognize that they can do something that requires learning, and that there is a process for doing so, a process that they can take hold of and make their own: we know our place and who we are. We are not lost in the crowd.*

*Our work should reflect and support the Camphill impulse, which is to bring the good to earth. That impulse has brought hope and inspiration to many.*

*The activity of craft is almost fundamental to a greater sense of what life is. Crafts are functional rather than works of art; they require a learning period, an apprenticeship in which you humble yourself to your materials.*



Camphill Village USA, Inc.  
84 Camphill Road  
Copake, NY 12516

For more information, please visit our website at **[www.camphillvillage.org](http://www.camphillvillage.org)** or call **518.329.4851**.

## ON THE COVER

Thanks to Marty Hunt for finding this 1960's photo of Chris Lydon taken shortly after he came to live in the Village. Chris is one of several residents who, in 2014, are celebrating their 50th or 50th-plus anniversaries. On page 8-9, see Chris and other celebrants as they look now!

Howard Van Lenten  
Manager of Communications and  
Community Relations  
[hvanlenten@camphillvillage.org](mailto:hvanlenten@camphillvillage.org)  
518-329-7924, Ext. 133

Christian G. Kersten, Director of Development  
[ckersten@camphillvillage.org](mailto:ckersten@camphillvillage.org)  
518-329-7924, Ext. 131

Contributing Writers:  
Nicoline Autrey, Kerst de Jong, Jennifer Hemmerlein,  
Marty Hunt, Nadja Jiquet, Andrea Kowalski, Elvira  
Neal, Lorraine Weiner

Photos: Larry Chernicoff, Michael Cooper, Richard  
Neal

Design: WindhorseCreative.com

## ECO-FRIENDLY NEWSLETTER

This newsletter is printed on paper made from 100% post-consumer waste recycled material, certified by the Forest Stewardship Council and manufactured chlorine-free in the Northeast US, which reduces the impact of shipping.





# GNP vs. GNH: Workshop Outlines New Ways to Assess a Nation's Well-being

by Nadja Jiquet, Village Co-worker and House Leader

Earlier this year, Thó Ha Vinh, who with his wife Lisi founded a Camphill community in Vietnam, visited Camphill Village and gave a workshop on the topic of Gross National Happiness (GNH). GNH is a holistic approach to valuing the work and development of communities and organizations. As opposed to a strictly economic model like the Gross National Product, GNH places weight on the alleviation of suffering – individual, social and environmental – and the happiness that can result from this approach.

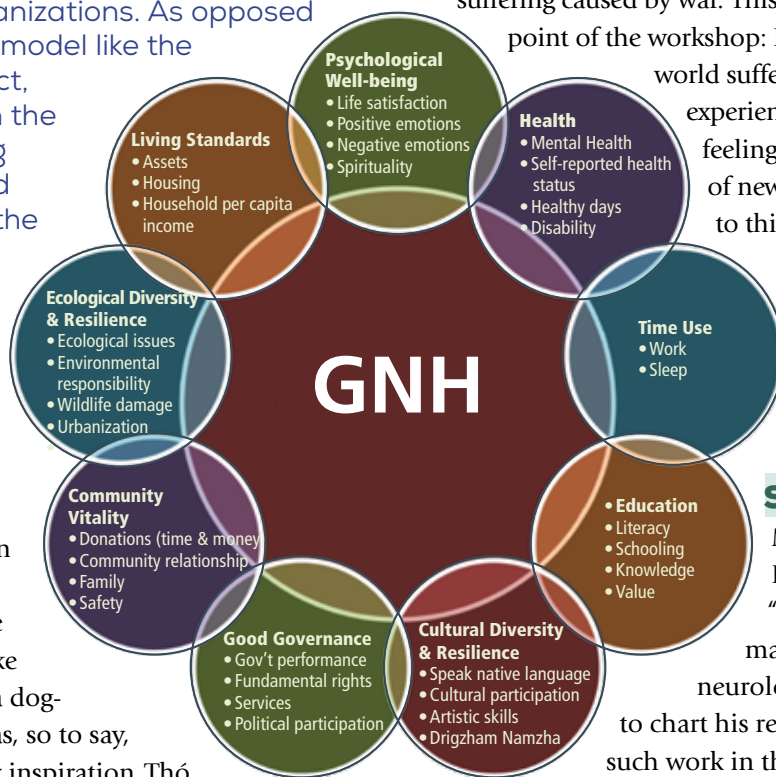
It is usually by the end of December that one can assess the highlights of one's year. This year, by the end of February, I knew that the workshop on Gross National Happiness given by Thó Ha Vinh here in Camphill Village was like a landmark along a path, a dog-eared page in a book; it was, so to say, "holding the place" for my inspiration. Thó came from Bhutan where he is the program director of the Gross National Happiness Center. His biography is filled with significant movements: wherever he goes, meaningful things happen and he goes many places. From a previous issue, you might remember The Peaceful Bamboo Family in Vietnam. This wonderful place for young people with disabilities – which recently became part of the Camphill Movement – was founded by Thó and his wife Lisi.

**MINDFUL CHANGES** Deeply connected to family and also to the many movements she has been a part of bringing about, Lisi moves between Bhutan and the Gross National Happiness Center in Switzerland – the home of her family – and Vietnam where she carries the fledgling Camphill community inwardly and outwardly. Thó is certainly a great and inspiring figure; movements move around him. And yet, the saying "behind every great man stands a great woman" does not apply to the work of Thó and Lisi: these two stand side by side, each completely

involved in actively promoting positive, mindful changes in the world.

One of Thó's many tasks was as the head of training and development at the International Committee of the Red Cross - a work that led him to travel to many places, witnessing the intense suffering caused by war. This brings me to a deeply touching point of the workshop: How does one deal with

world suffering? You've perhaps had this experience: being overwhelmed by heavy feelings in the attempt to read a piece of news. The answer or responsibility to this question was clear: *"We need to look courageously at the problems of our time in order to bring about changes. By opening our heart to suffering, we can create an opportunity for changes."*



## SEEDS OF CHANGE

Mathieu Ricard, a French Buddhist monk known as "potentially the happiest man," was the subject of some neurological experiments which were to chart his reactions to suffering. Through such work in this field, it had been shown that the brain does not distinguish between the

subject's personal suffering and the subject's witnessing of another's suffering. Matthieu Ricard's "positive" reactions to witnessing suffering were thus all the more shocking; it was as though he was experiencing sympathy and pleasure. He explained this phenomenon by sharing his cultivated practice of immediately "becoming compassion" – of sending forth prayers and good thoughts (the seeds of change) – upon encountering suffering.

As Thó was sharing situations and people he encountered, a feeling arose for the imperative social task facing us: to give voice to the voiceless. *It is by meeting those at the edges of society that we see where the system has failed, and to hear those who do not have a voice becomes the most fundamental transformative element.*

More than forty years ago, Robert Kennedy gave a speech warning people about how poorly we measured the success of our nation and the consequences we were creating: referring to the Gross National Product, he said, *"it measures everything... except that which makes life worthwhile."*

**CHANGE THE FOCUS** Today, now, this warning appears as the herald of a state of emergency. From a position in which he was witnessing and trying to offer support against the damages created by our system, Thó developed a wish to work proactively, on the prevention-side of the problem. *What is happening in Bhutan, with and through Gross National Happiness, is an endeavor to change the focus of our current system by putting the well-being and happiness of the people at the center.*

The creation of this new development is, of course, imprinted by Bhutanese culture, and so the Mandala of Compassion, pictured right, is used as a symbol and tool of GNH.

A mandala is a symbolic representation of the human mind and the universe. Its four doors are connected with four basic attributes: Loving Kindness (as the will to make others happy), Compassion (as the will to alleviate the suffering of others), Joy (as the authentic absorption and appreciation of the totality of the world's offerings), and Equanimity (as a mother who loves all her children in the same way and shares everything equally among them).

GNH has four pillars which guide the development process in Bhutan: The first is **Preservation of the Environment**: We face an ecological crisis because we use in 12 months what it takes the earth 18 months to produce. At current rates of consumption, we are caring neither for the earth nor for future generations.

The second is **Good Governance**: Leadership is in need of a new understanding and should be seen as a service to alleviate suffering, not a position of power.

The third is **Preservation and Promotion of Culture**: as against the contemporary vision of "culture" in which everything is organized around the accentuation of a constant sense of lack and the belief that our happiness comes from outer possessions – which reinforces and is reinforced by unhealthy economic patterns.

The fourth and last is **Sustainable and Equitable Socio-Economic Development**: the main problem is not the lack of resources but the unfairness in the distribution of these resources.

Then there is the GNH index which is made up of nine domains (see graphic, opposite page): Psychological Well-Being, Health, Time Use, Education, Cultural Diversity and Resilience, Good Governance, Community Vitality, Ecological Diversity and Resilience, and Living Standards.

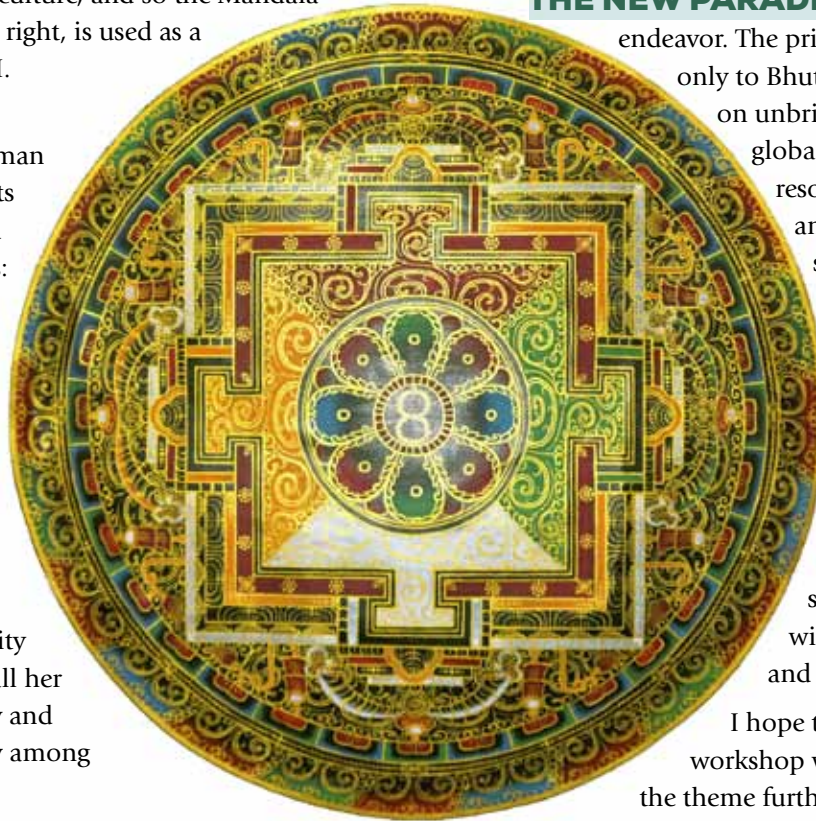
These nine domains, along with their sub-domains and indicators are all considered in the process of deciding upon a development issue. In Bhutan, there is also a survey every two years which looks at the strength of the nine domains and if they are in need of attention.

**THE NEW PARADIGM** GNH is thus a worldly endeavor. The principles of GNH matter not only to Bhutan, but to a world focused on unbridled economic growth, global warming, pollution, resource degradation, species and cultural extinction, stress-related disease, and entrenched poverty and insecurity. GNH directly addresses such global, national and mental challenges by pointing to the non-material roots of well-being. In contrast to the present GDP-based system, the new paradigm will enhance human happiness and the well-being of all life.

I hope these impressions of the workshop will inspire you to pursue the theme further on your own and actively wrestle with these ideas which are of global consequence. More information on GNH and its partner initiatives can be found at: [www.grossnationalhappiness.com](http://www.grossnationalhappiness.com)

To end, I would like to share the definition of happiness given by Juime Thinley, the prime minister of Bhutan, in 2009 – a definition that has reconfirmed my gratitude for Camphill. There is such ground and potential here to connect with a world-wide healing stream

*"We have now clearly distinguished the "happiness" in GNH from the fleeting pleasurable feel-good moods so often associated with that term. We know that true abiding happiness cannot exist while others suffer and comes only from serving others, living in harmony with nature and realizing our innate wisdom and the true and brilliant nature of our mind."*



# ECONOMIC IMPACT REPORT

## Local Camphill Communities Add \$22.4 Million to the Regional Economy

A recent report by the four Camphill communities in Columbia County, NY, showed that over a 12-month period ending March 31st, they poured more than \$22.4 million into the region's economy.

More than \$12 million in purchases, compensation and benefits went to businesses, organizations, service providers and individuals in Columbia County alone.

The communities, which provide services to people with special needs and to elders, include Camphill Village USA in Copake, NY; Camphill Hudson and Triform in Hudson, NY; and Camphill Ghent in Chatham, NY.

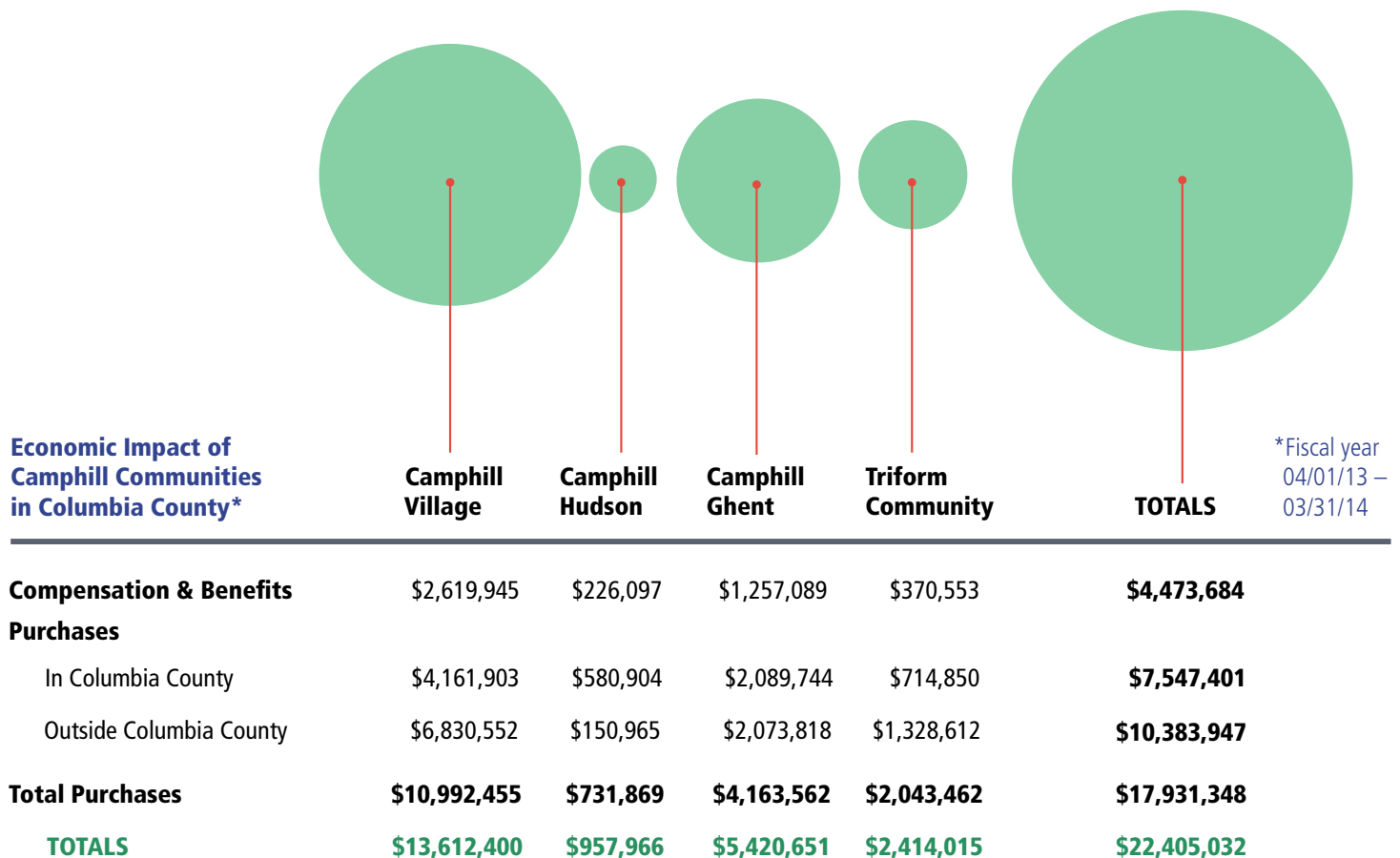
Bill Vogt, President of the Camphill Village Board of Directors, said that "over the years, the four Camphill communities have provided support and created innumerable opportunities for personal growth for thousands of individuals, including people with special needs and the volunteers that live and work alongside them. And in the process," he said, "those communities have made major contributions to the region's quality of life."

Vogt said that while many people may be unaware of the work done by the Camphill communities, "...all who live in the area benefit from their presence. We are proud of what we do for the populations we serve," he said, "and proud of the role we play in the larger community."

**Regional Benefits** Of the \$22.4 million spent by the communities, approximately \$17.9 million was for goods and services, and \$4.5 million in the form of employees' compensation and benefits.

Principle spending categories included food, household and office supplies, energy, construction, insurance, cars and equipment, gasoline, telephone, furniture, repairs and maintenance.

Below left is a breakdown of each community's financial impact as well as consolidated statistics for all four communities.



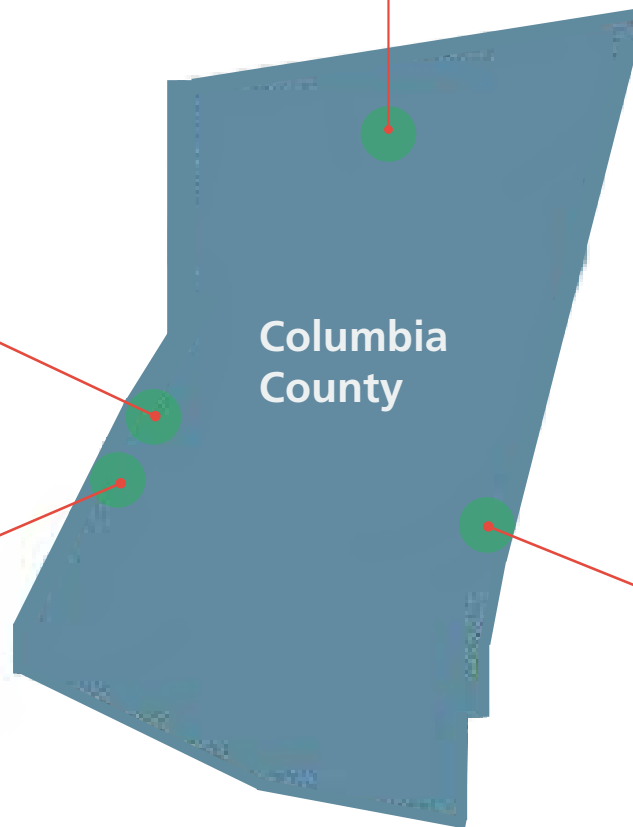


# THE CAMPHILL COMMUNITIES IN COLUMBIA COUNTY

## **Camphill Hudson**

operates two life-sharing homes with adults with developmental disabilities as well as Solaris, a Center for the Social Arts in the heart of downtown Hudson, NY. For more information, please visit [camphillhudson.org](http://camphillhudson.org)

**Camphill Ghent** offers a unique opportunity for elders to live rich, fulfilling, independent lives in a vibrant community setting with like-minded adults. Camphill Ghent also offers a licensed adult care facility for elders needing more support, including 24-hour access to assistance and care. For more information, please visit [camphillghent.org](http://camphillghent.org)



## **Triform Camphill**

**Community** provides a full curriculum designed to meet the needs of young adults with special needs between the ages of 18 to 30. It offers a transitional youth guidance program that integrates home and community life with work skills development, classroom activities, therapies, and a rich variety of social/cultural experiences. For more information, please visit [triform.org](http://triform.org)

**Camphill Village USA** is a unique and vibrant life-sharing community of 230 individuals, including 95 adults with developmental disabilities and service volunteers who live and work together on 615 acres of verdant hills, pastures, and beautiful gardens in southern Columbia County. Life at Camphill Village is based on the active affirmation of the dignity, spiritual integrity, and valued contribution of each individual. For more information, please visit [camphillvillage.org](http://camphillvillage.org)

# 50 years

at Camphill Village



*Rochelle Sternthal and Ilene Oloff, late 60's*

It is my privilege to say "Congratulations" to twelve Camphillers who have lived and worked in our Village for fifty years or more. Our Village is the beautiful place it is today thanks to the efforts of these twelve, their families and so many others throughout our fifty-three year history. Camphill Village has been known for supporting individuals, keeping the impulse of Camphill alive, and welcoming guests. We have been helped in all these endeavors by these strong friends.

**Thank you for being a huge part of our community – we couldn't have done it without you!"**

*Executive Director*

Memories ...

Ilene Oloff:

Favorite housemother – Renate Sachs

Charlie Gutman:

Favorite workplace – cutting wood on the Estate, farming

Sheila Adelman:

First friend was Rochelle Sternthal

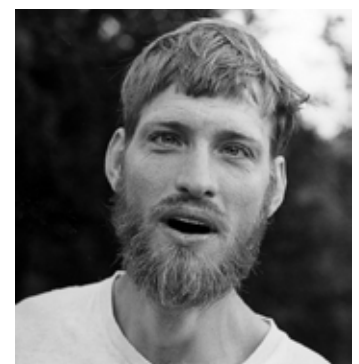
Chris Lydon:

Favorite job was working in the garden with Murdo Dowds



*Standing: Beth Stevens (50 years), Rochelle Sternthal (52 years), Robert Friedman (51 years), Danny Morse (51 years), Ilene Oloff (50 years)  
Seated: Chris Lydon (50 years), Mimi Raymond (50 years), Anne Gordon (51 years), Charlie Gutman (52 years), Sheila Adelman (50 years), George Schwerling (50 years). Not pictured: George Pearson (51 years)*

*George Schwerling, circa 1964*





# An Interview with Danny Morse

by Marty Hunt

## 1964 :

### THIS IS THE WAY IT WAS

More than 50 years ago, at the dawn of President John F. Kennedy's New Frontier, "...intellectual disability was a neglected issue, receiving minimal state or federal funding. Many children and adults with intellectual disabilities were cared for in overcrowded, understaffed institutions that isolated them from their families and communities. President Kennedy, with strong support from his sister Eunice Kennedy Shriver, brought intellectual disabilities out of the shadows and into the public light."\*

Camphill Village USA was part of that transformative movement which fundamentally changed the way society supports people with developmental disabilities. Camphill Village emphasizes the dignity and integrity of every individual, regardless of appearance or perceived disability. The Village's 50th and 50th+ anniversary celebrants were in the vanguard of that movement, of which we are all grateful beneficiaries.

\*Website, John F. Kennedy Presidential Library and Museum

*What did you think of the Village the first time you saw it?*

My friend Jay Parker and his mother and my father and I came to visit in April 1963 on our way back to the Rhinebeck Country School at the end of spring vacation. Charlie Gutman showed Jay and me around, and our parents talked to Carlo Pietzner. I was impressed with what I saw, and my dad thought it would be a good place for me. Jay and I both arrived September 9, 1963,

*What places have you worked in the Village?*

I worked on the Farm with Hartmut von Jeetze, in the Vegetable Garden with Tom Roberts and Ron Admiral, in the Bakery with Michael Balcombe, in the Co-op with Joseph Shea and Webster Beal, and in the Turtle Tree Seed shop with Beth and Nathan Corymb. For many years I worked fulltime in the Enamel Shop – while it still existed. Asger Elmquist and I began the Enamel Shop downstairs in the White Barn which we had rebuilt from an old chicken coop. We did our first enameling in February 1964.

*Is it true you trained most of the Enamel Shop workleaders?*

Yes. No one knew how to enamel before they came. I worked with Natalie Brewer, Dan Stratton, John Brinton, David Carlson, Steve Ljovshin, Kevin Kane, Ken Love, Leon Seidenberg, David Root, and Lonnie Hunt – all in the Enamel Shop over the years.

*What has changed in the Village over the years? What hasn't changed?*

There are more houses now. When I first came there were only three Village houses – the original Bungalow and Orchard and the newly built Omaskos. Willow and Bluestone were also there, but weren't used as Village houses. Lots of co-workers have come and gone in 53 years. My lifestyle has stayed pretty much the same over the years.

*People always ask you about Village history. How do you have such a good memory?*

I can vaguely remember when I was two. I can clearly remember when I was three. My father used to ask me to remind him of names. My brother and sister say I remember old family names better than they do.

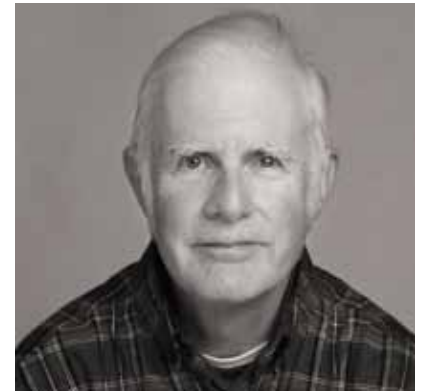
*What's your favorite part of the week now?*

On Tuesdays I have "rest" mornings. I go to the Coffee Shop, drink coffee, eat a cookie, and read the paper. I meet a lot of people that way!

Orchard & Bungalow (now called Aillinn) winter 1961-62



*Danny then*



*Danny now*

George Pearson, circa 2008



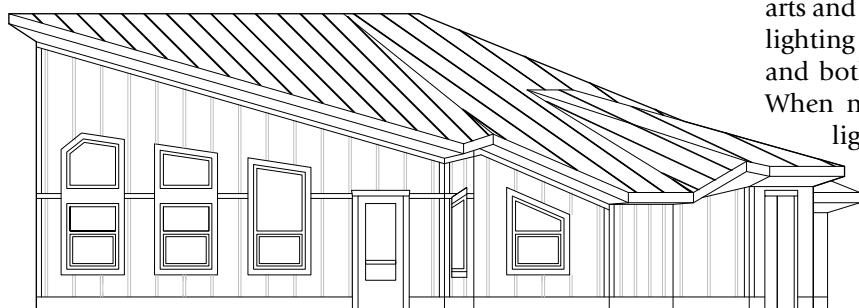
# Buildings Now Under Construction Will House Four Village Workplaces

by Andrea Kowalski, Registered Architect, LEED, AP



New Weavery Building: North Elevation

New Weavery Building: Northeast Elevation



Two new Workshop buildings are currently under construction at the site of the old Weavery and will create new homes for the Weavery, Glass, Candleshop and Bookbindery workshops.

**A Collaborative Process** The design of the new cluster project began in the Fall of 2012, with several collaborative sessions in which the entire community participated: sketching, discussing and brainstorming ideas. Since work is a core component and value of Village life and culture, the planning process created much enthusiasm and anticipation.

From all the ideas that emerged from these sessions, as well as from many meetings of the design group and workshop masters, a final concept was distilled and developed.

Windows and skylights are plentiful, and both can be opened for fresh air and good ventilation.

**Areas for Product Display** Two buildings will house a total of four large workshop

spaces. The Weavery Building is approximately 3,500 square feet and will house the Weavery and Stained Glass workshops. At 3,000 square feet, the 'Candleshop Building' is slightly smaller, and will contain the Candleshop and Bookbindery. Both buildings are laid out similarly; each will have an entry gallery where products can be displayed and where groups can gather; separate coat and boot rooms, and a center core. The workmasters of each building will share an office as well, to allow for greater flexibility in involvement in the neighboring workshop.

**Natural Lighting** Since good lighting is crucial to the manual arts and to health, one design goal was to use as much natural lighting as possible. Windows and skylights are plentiful, and both can be opened for fresh air and good ventilation. When natural light is not enough, a system of LED track lighting above the workspaces can be used. The interior floors will be a floating ash floor over a radiantly heated concrete slab, making the workshops very comfortable.

**Variable Scale** The geometries of the buildings are highly energized, with raked walls ascending to peaks at the far corners of each workshop space. The line of energy is directed back towards the line of sugar maples that the buildings are nestled into. The tall roof ridge allows the interior of the workshops to be spacious and light. As the walls lower and the ceiling is folded back down, the scale becomes more familiar and intimate, so one does not feel lost in these large spaces.

The color scheme has just been selected, and both buildings will be painted with muted grey/greens, with a tan color metal roof. A landscaped entry court including some tall trees, is in design, with a looped 4' paved sidewalk linking with the existing paths in the area and a path of green pavers running along it for cars.

From all the ideas that emerged ... a final concept was distilled and developed.

The construction is anticipated to be complete in June 2015.



# SUPPORT The Work of CAMPHILL VILLAGE

Thanks to the generosity of over 700 donors, we've raised \$800,000 of our Annual Fund goal of \$1.75 million. A huge thank you to all who have given so far!

Our fiscal year doesn't end until March 31st, but did you know that we usually raise nearly 40% of our goal in November and December alone? This is a great time of year to give. Here's why: contributions made to Camphill Village in 2014 are tax deductible, and depending on the size of your gift, you might enjoy tax savings in April.

Here are some ways you can support the Annual Fund before December 31st:

- Use the envelope in this newsletter to send your gift to us here at the Village
- Respond to one of our fundraising appeals
- Make a gift online by visiting [www.camphillvillage.org](http://www.camphillvillage.org) and clicking on the "Donate Now" button
- Buy a ticket for the Anne Ratner Concert Series and experience world-class performers like Richard Goode and Emanuel Ax. You won't receive a tax deduction, but you'll be supporting both our 40th anniversary season and the Annual Fund!
- Make a bequest intention for Camphill Village

Your gift means so much to the 230 people who live here in the Village. Every contribution helps provide much needed therapies to our residents, helps maintain and beautify our grounds, and supports our many craft workshops, biodynamic gardens, and our farm.

**We need your support more than ever. Want to learn more about how you can give? Call Assistant Director of Development Jennifer Hemmerlein at (518) 329-7924 X134 or e-mail [jennifer@camphillvillage.org](mailto:jennifer@camphillvillage.org)**

## Guarneri String Quartet and Special Guest **Pamela Frank** Will Perform in the Anne Ratner Concert Series

Great news for everyone who follows the stars of the classical music world! Former members of the famed Guarneri String Quartet, with special guest violinist Pamela Frank, will perform in the Anne Ratner Concert Series. The date is Tuesday, February 10 at 7:30 p.m. in the intimate setting of Chuck Sims' and Nancy Wolf's home in Manhattan.

The renowned Guarneri String Quartet "is among the most revered and enduring ensembles of its kind in the world" (National Public Radio). It has circled the globe countless times since it was formed in 1964, playing in the most prestigious halls in North and South America, Mexico, Europe, Asia and Australia.



Violinist Pamela Frank was the winner of the Avery Fisher Award, one of the most prestigious honors given an American instrumentalist. Since then, she has appeared with major orchestras throughout the United States and Europe. In addition to her career as a performer, Ms. Frank holds the Herbert R and Evelyn Axelrod Chair in Violin Studies at the Curtis Institute of Music where she has taught since 1996.

## Save the Date!

### Reserve now for Emanuel Ax:

**April 14, 2015** More good news just in: Emanuel Ax has agreed to perform in concert on April 14, 2015 as part of the Anne Ratner Concert Series! Mr. Ax first captured public attention when, at age 25, he won the first Arthur Rubinstein International Piano Competition, followed one year later by the Michaels Award of Young Concert Artists. In 1979 he won the coveted Avery Fisher Prize. A regular performer with the world's major symphony orchestras, Mr. Ax's appearance in the intimate setting of the Anne Ratner Concert Series will undoubtedly be a sold-out event.

**Concert tickets are \$175 and include a buffet supper. All proceeds benefit the Annual Fund at Camphill Village. To reserve your seats, contact Jennifer Hemmerlein at [jennifer@camphillvillage.org](mailto:jennifer@camphillvillage.org) or (518) 329-7924 X134.**

**To learn more, visit [www.camphillvillage.org](http://www.camphillvillage.org).**





# FAMILY DAY

Bright sunshine, cool breezes and, of course, happy faces marked the celebration of Family Day 2014 on October 12th.

The day began with a presentation in Fountain Hall, updating everyone on current projects and activities, followed by lunch in the houses.

In the afternoon, families and friends gathered for an open house at Hickory, the newest Village residence. Later on, people dropped by the Coffee Shop and Café. Informal gatherings took place throughout the day.

Thanks to Michael Cooper for these photos.









**Kerry Solomon**  
October 24, 1973 –  
September 27, 2014

---

## A Tribute to Kerry Solomon

*[Adapted from a longer tribute delivered by Rev. Franziska Hesse at Kerry's funeral in Fountain Hall.]*

Kerry was born on October 24, 1973. For her parents, Ian and Mel Solomon, this day brought both great joy and great sorrow, as Kerry needed immediate surgery. Many others followed and though the task was difficult, her parents made an inner commitment to the care and education of Kerry, even though it was suggested they put her in an institution.

At age three, Kerry could participate in a nursery school and make friends with other children. And when she was seven, her baby brother, Kevin, joined the family. The two took to each other from the start. She was a constant sweet presence in his life.

In her mid-twenties Kerry had to endure major surgery, which once more saved her life. Soon after this, she joined the Camphill Village community where she joined Tamarack house, under the guidance of Kerst and Carla de Jong.

Kerry quickly integrated herself into Camphill life. Her mother calls the years in Camphill "Kerry's golden years". The bakery became her work sphere. Not only was she well versed in her own tasks, but also knew and was a leader in the whole over-arching curve of the bakery's production cycle over days and weeks and years: she knew what needed to be made, how it was going to be made and which crew members would be present on any given day to make it.

Kerry participated in all the social activities in the Village. She loved singing, music and humor. Kerry was a mature being, even-tempered, never angry and always ready to smile. The many difficult challenges to her well-being left their mark in her soul in the form of anxiety. But her ready smile, her maturity and her ability to take things in stride allowed her nevertheless to push forward.

To Kevin's children she was a wonderful auntie; they loved her visits in the summer. She took this role seriously. She read to them and guided them gently with her amazing sweet spirit. Her sudden illness and death have taken everyone by surprise. Our remembrance of her will strengthen her consciousness in the spiritual world and will help her find a new orientation. We know that whatever the new challenges may be, she will take them in stride.

Six months ago Kerry was present when we accompanied Carla, her beloved house mother, into the realm of spirit. Once more she will now have her by her side.







*by the Co-worker Development Team:  
Elvira Neal, Lorraine Weiner and Nicoline  
Autrey*

## A New Group of Service Volunteers Add an **INTERNATIONAL FLAVOR** To Village Life



Once again we are very fortunate to welcome a group of wonderful new service volunteers – individuals and families from around the world, as far away as China, India, Zimbabwe, Colombia, and South Korea. Also included in this group are individuals from England, Slovakia, Germany, Denmark and Delaware, as well as our AmeriCorps Members from New Jersey, Massachusetts and Utah. While most will stay for one year, some have chosen to participate in our four-year Social Therapy Program or have come to take on the responsibility for a house community.

For many of the newcomers, this is a first encounter with Camphill life. Quite often this is a chance for them to develop independently and explore their own potential, while at the same time being exposed to a multi-cultural environment. The students of our Social Therapy Program very often come with prior experience and a strong wish to deepen their understanding of Social Therapy.

In September and October, all of the new volunteers went through an intense period of mandatory trainings which include CPR, Ethics of Touch, SCIP (Strategies for Crisis Intervention and Prevention), Fire Safety and Medicine Givers Course. Now they are prepared to fully immerse themselves into life in the Village.

We are grateful for their dedication and are looking forward to a year that will be enriched by their contributions.

Here, by country of origin, are the new service volunteers who have joined Camphill Village:

**China** – Molly Wang and Coco Huang

**Colombia** – Isabella Villaquiran-Sterling

**Denmark** – AnneMette, Erik, Dagmar, Signe and Johan Kristensen

**Germany** – Astrid Soltau, Jule Guhl, Charlotte Driller, Philipp Schloer, Annemarie Schmidt, Nico Christiansen, Jonas Sigrist, Johannes Negel and Liya Redae

**India** – Seemantini Pagdi

**Slovakia** – Robert Rozenberg

**South Korea** – Minji Lee

**UK** – Jonathan Goodban

**USA** – Gregory Amoresano, Jason Spencer, Lindsay Katkowski, David Ree, Katarina, Isabelle and Alena Ericksson-Ree, Jacquelyn Bieringer, and Anja and Sophia Bieringer-Drake

**Zimbabwe** – Arafat Machoni





Camphill Village USA, Inc.  
84 Camphill Road  
Copake, NY 12516

NON-PROFIT ORG  
U.S. POSTAGE PAID  
C R S T . N E T  
1 2 5 5 0

## Village View

The Newsletter  
of Camphill Village  
November 2014



Avery Fisher Prize winner **Pamela Frank** will appear as guest violinist with the Guarneri String Quartet, as part of the 40th season of the Anne Ratner Concerts on Tuesday, February 10th at 7:30 p.m. at the home of Chuck Sims and Nancy Wolf in Manhattan.

See page 11 for details.